

070-0200
.675" (17.1mm)
Diameter Striker Bolt
and Optional Guard



DESIGNED FOR:

- Use with TriMark's two-rotor latches and cage nuts that require a .675" (17.1) diameter striker bolt

Global Locations:

TriMark Corporation
500 Bailey Avenue
P.O. Box 350
New Hampton, Iowa 50659
United States
Tel: 641-394-3188
Fax: 641-394-2392
1-800-447-0343
www.trimarkcorp.com

TriMark Europe
Cedar Court
Walker road
Bardon Hill
Coalville LE67 1TU
United Kingdom
Tel: +44(0)1530 512460
Fax: +44(0)1530 512461
www.trimarkeu.com

TriMark (Xuzhou)
Building A5 Jingwu Road
Xuzhou Economic
Development Zone
Xuzhou, Jiangsu
221004 PR China
Tel: +86 516 8773 0018
Fax: +86 516 8773 0058
www.trimarkcn.com



TriMark. Interactive. Product. Selector



TriMark



TriMark Corporation



TriMark Corporation



070-0200 .675" (17.1mm) Diameter Striker Bolt and Optional Guard

MATERIAL:

- Typical materials include AISI 4140 and AISI C10B21 steel (or equivalent), heat treated to TriMark ES-141

INSTALLATION:

- Torque 7/16-14 UNC-2A to 56 ft-lbs minimum depending upon surface conditions
- Torque 1/2-13 UNC-2A to 85 ft-lbs minimum depending upon surface conditions
- Torque M12 X 1.75-6g to 75 ft-lbs minimum depending upon surface conditions

FINISH:

- Zinc plated with clear chromate

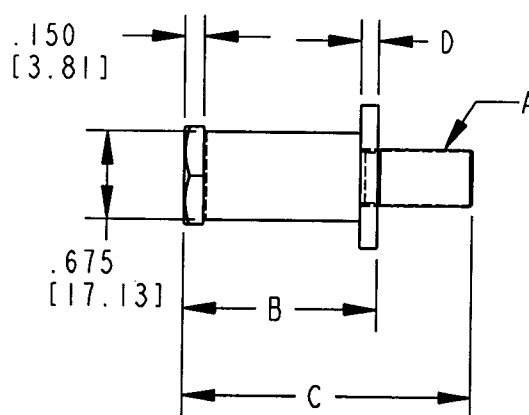
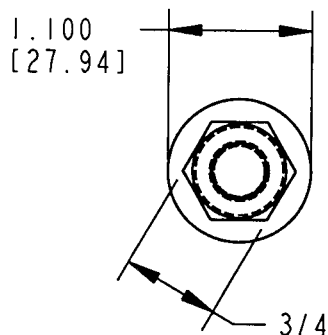
Individual part dimensions are for reference only. Refer to individual part drawings for complete dimensions, specifications, and installation procedures. Engineering assistance and application drawings are available.

LATCH & STRIKER INSTALLATION:

- Install striker bolt in door frame
- Close door carefully and check for interference between head of striker bolt and latch components
- Add or remove shims under striker bolt washer as required (outside diameter of shim should be larger than outside diameter of striker bolt washer)
- Adjust striker bolt vertically so door is not guided upward or downward while being closed
- CHECK TO DETERMINE THAT BOTH SECONDARY AND PRIMARY LATCHING POSITIONS ARE USABLE
- Door should be latched but not "closed" in secondary position and latched to anticipated "closed" position with respect to adjacent surfaces in primary position
- If both primary and secondary positions are not evident, readjust striker bolt
- After installation, check door alignment and door seal pressures

CAUTION: TriMark striker bolts are designed and tested to meet or exceed FMVSS 206 (ECE R11) safety requirements only when used with TriMark's corresponding FMVSS 206 (ECE R11) compliant latches. Note that some of the longer striker bolts have diminished load values in certain latch families. Please check with TriMark Engineering before finalizing your striker selection requiring FMVSS 206 (ECE R11) compliance.

For more information visit
www.trimarkcorp.com



NOTE: STRIKER BOLT
HEAD AND DRIVE DETAIL
MAY VARY FROM SHOWN